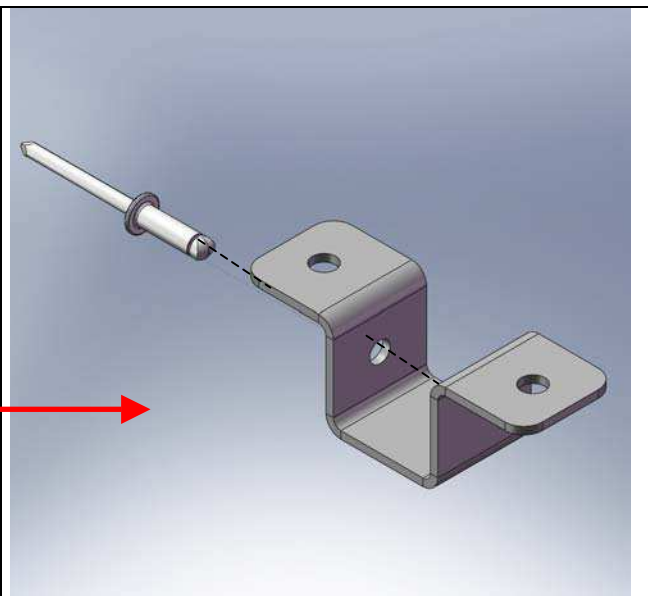
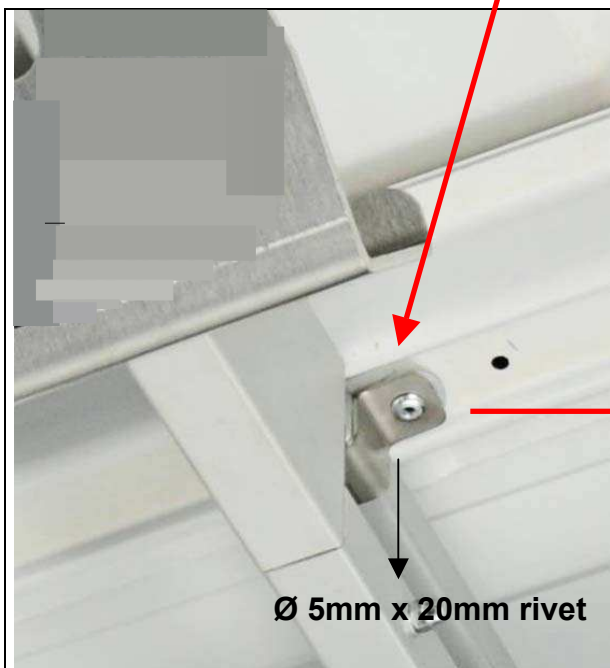
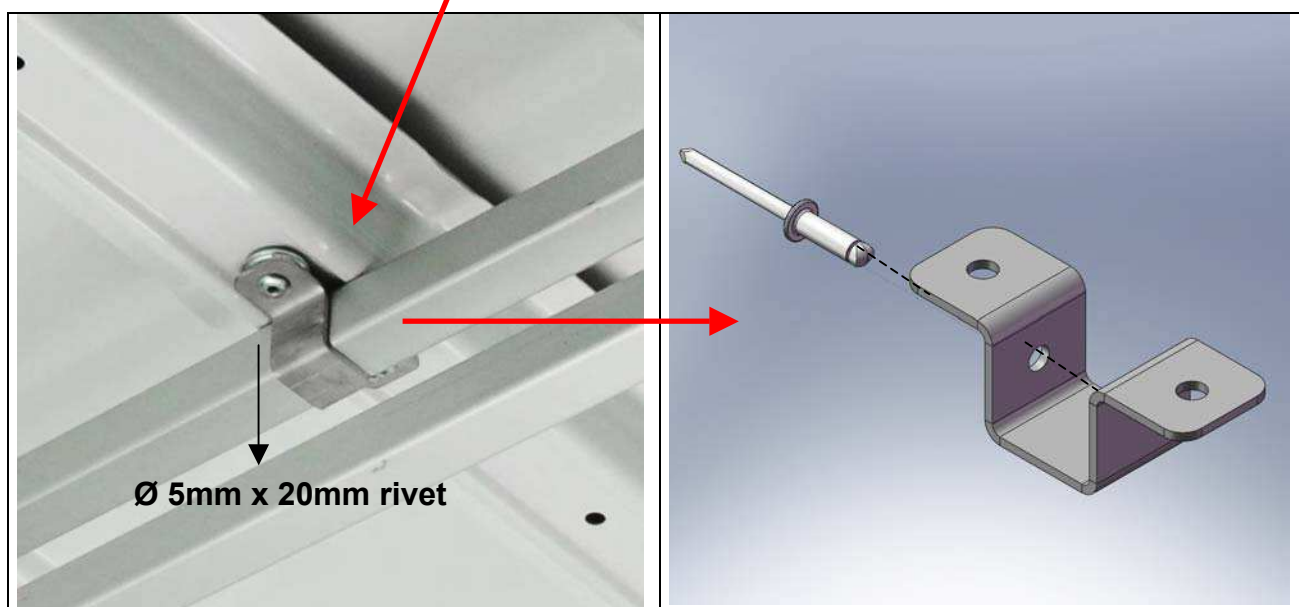


MOUNTING INSTRUCTION STEP UP Ladder rack

Fix the ladder rack to the under roof bearers by using the two "U" brackets provided. Each bracket will need three Ø 5mm x 20mm rivets; two rivets will be used to fix the bracket against the roof bearer and one lateral rivet will act as a stop. You will need a 5.25 mm drill bit to prepare the holes for the rivets (use the "U" bracket as template to make the holes).

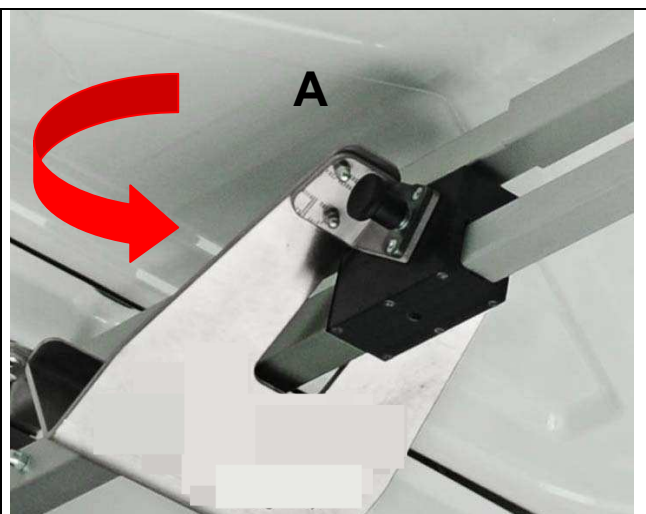


MOUNTING INSTRUCTION STEP UP Ladder rack



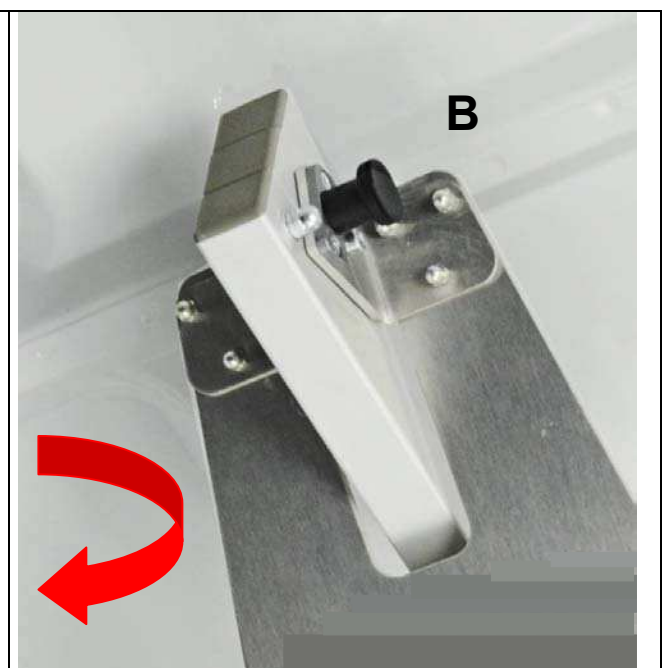
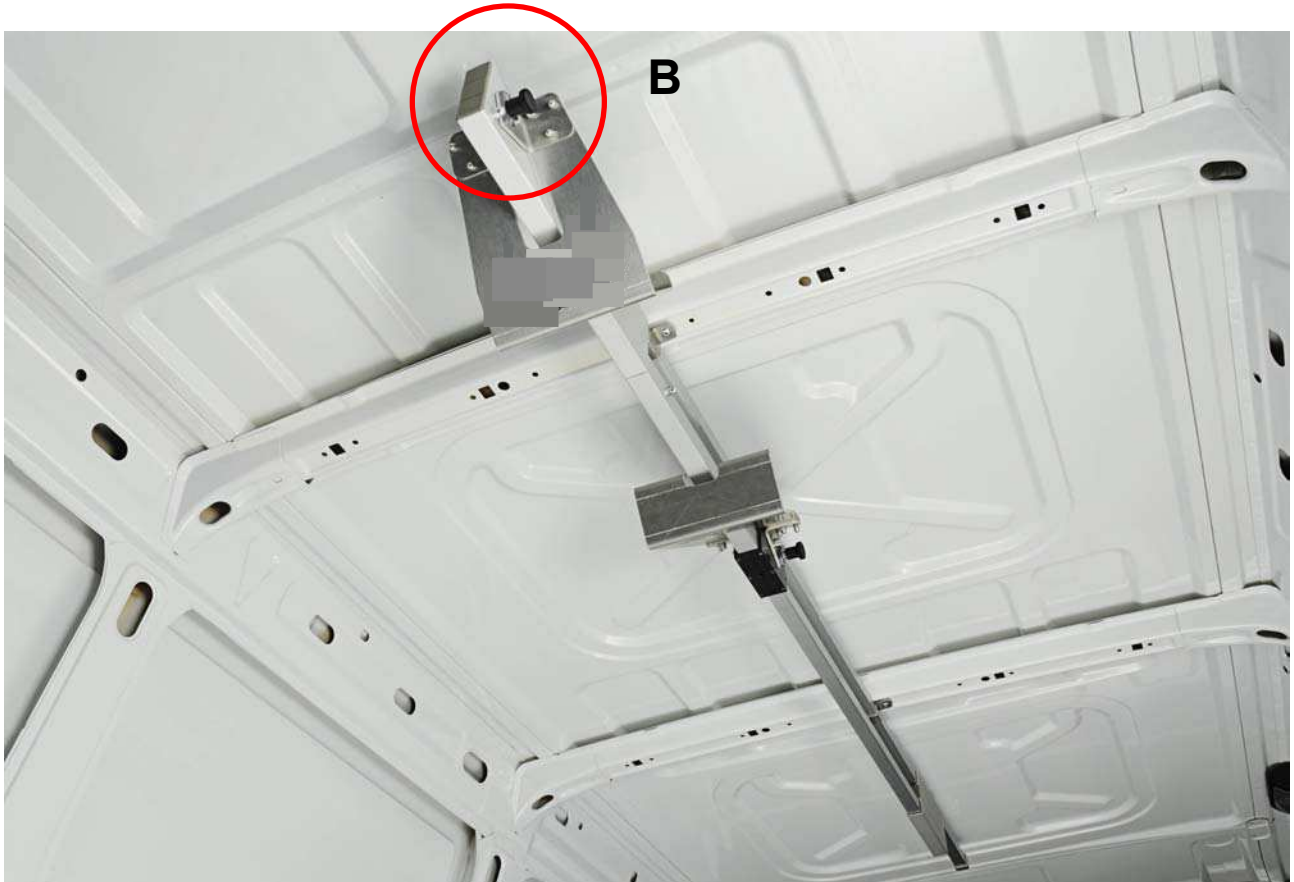
MOUNTING INSTRUCTION STEP UP Ladder rack

Rotate knob (A) to move the front retainer in position, according to the ladder length.
Rotate the knob anti-clockwise.



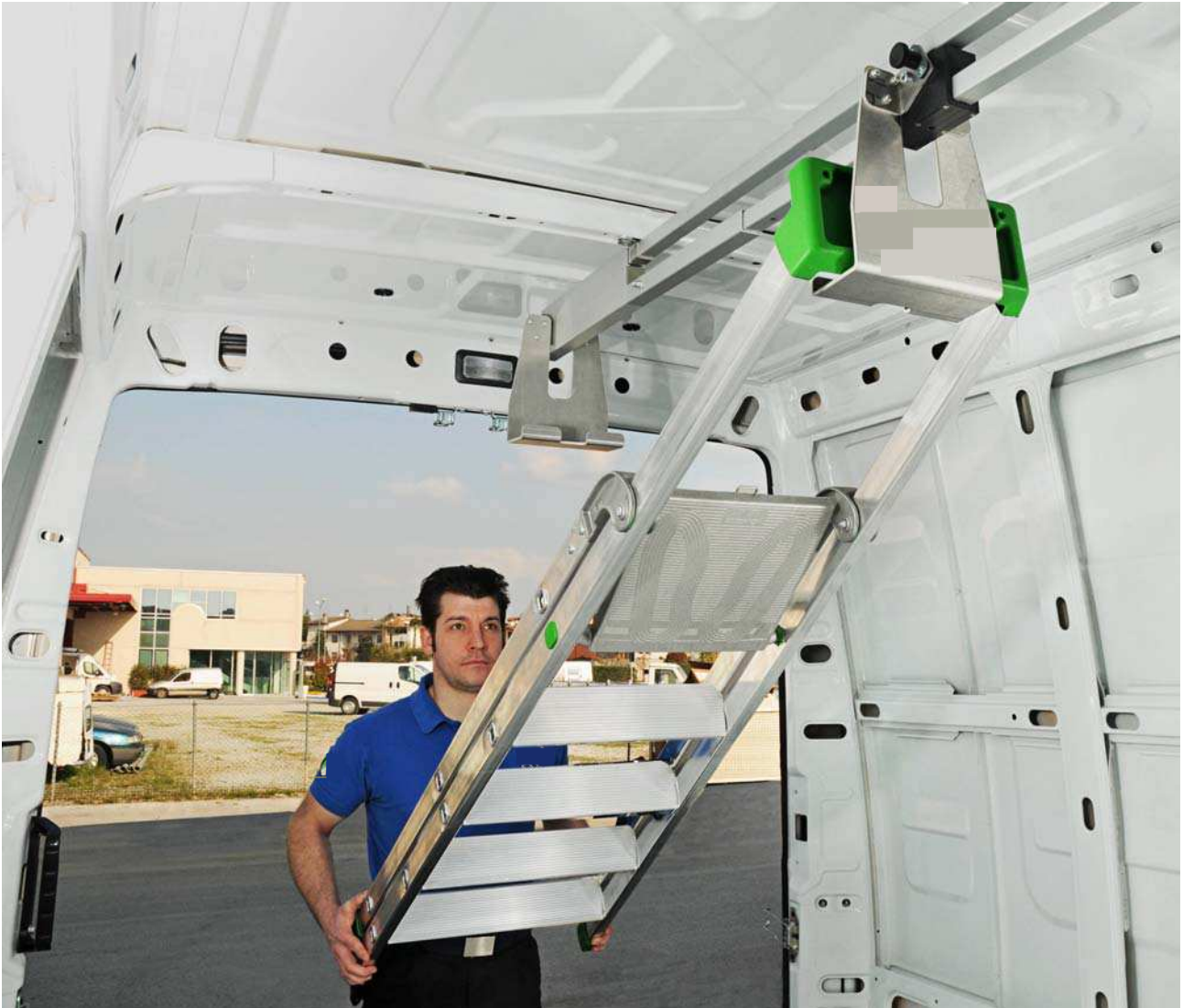
MOUNTING INSTRUCTION STEP UP Ladder rack

Release the back retainer by rotating knob (B).
Rotate the knob anti-clockwise.



MOUNTING INSTRUCTION STEP UP Ladder rack

Fit the ladder in between the two retainers, starting from the front one.



MOUNTING INSTRUCTION STEP UP Ladder rack

Lock the retainers in position by rotating knob (A) and (B) clockwise.
Complete the securing of the step ladder by fastening the belts provided.

